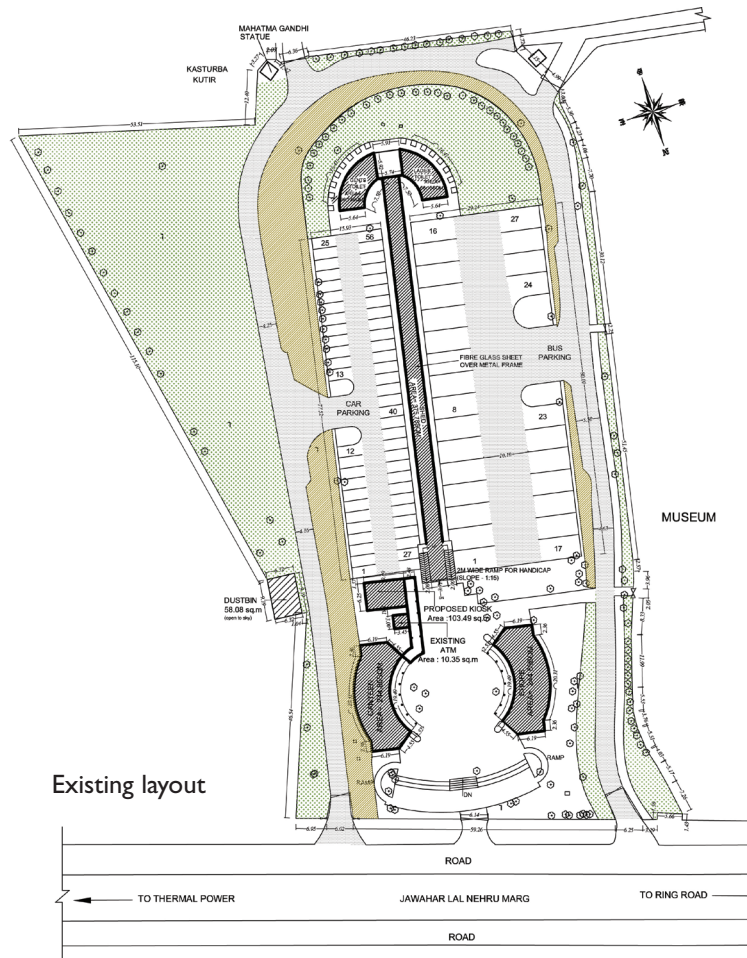


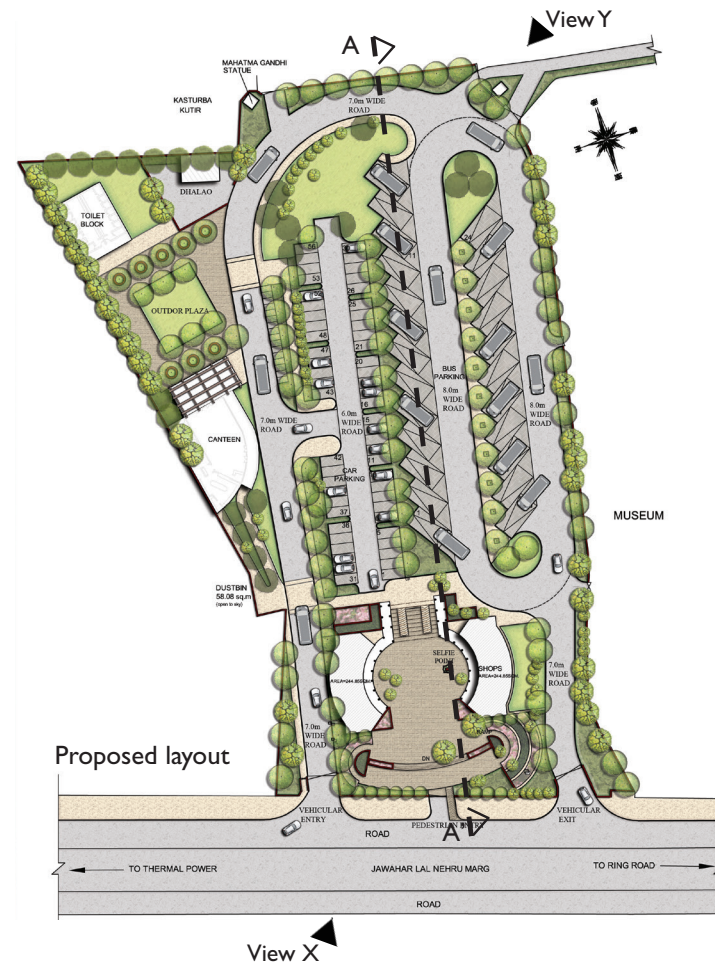
(g) Rajghat Samadhi Complex

i. Parking Redevelopment Master Plan



Existing layout

Proposed layout of Parking Area in Rajghat Samadhi Complex



Proposed layout

Existing issues

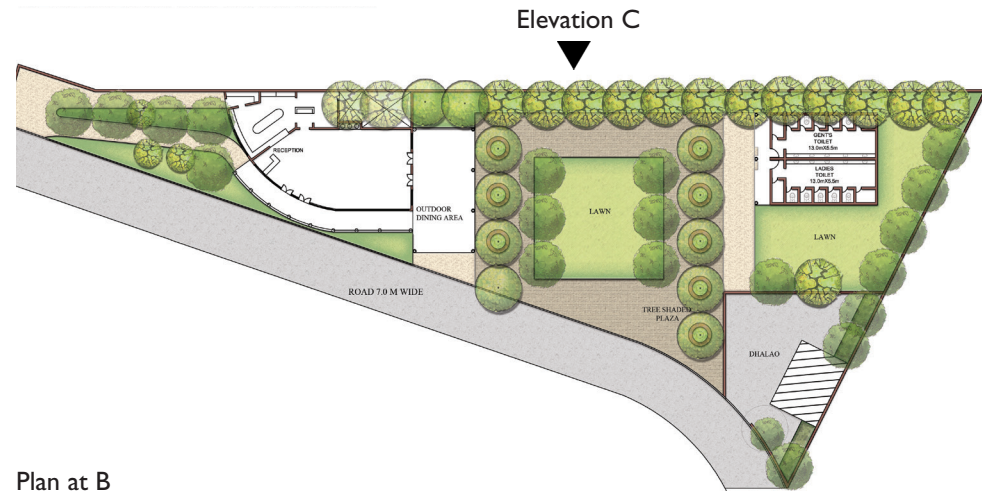
- Road widths varying from 4.16 m-4.63 m
- Parking bays not properly designed.
- No space for 2 wheeler parking.
- Canteen creates chaos with washing and spill-over happening at the parking complex entry.
- The Semi-covered shed leading to the toilets and their location is visually unappealing.

Proposal

- Proposed Road are designed as per the standard widths.
- Parking bays are redesigned with green strips and turning radius.
- Dedicated space for 2 wheeler parking.
- Canteen and toilet block relocated to the un-utilized green area with indoor & outdoor seating spaces and well designed plazas.
- Khadi kiosk and ATM to be relocated in the structure presently holding the canteen.



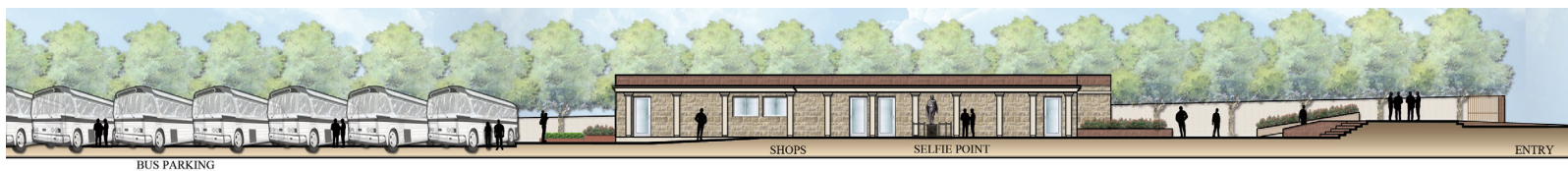
Aerial Views showing the Parking area Redevelopment Master Plan for Rajghat Samadhi Complex



Plan at B



Elevation C

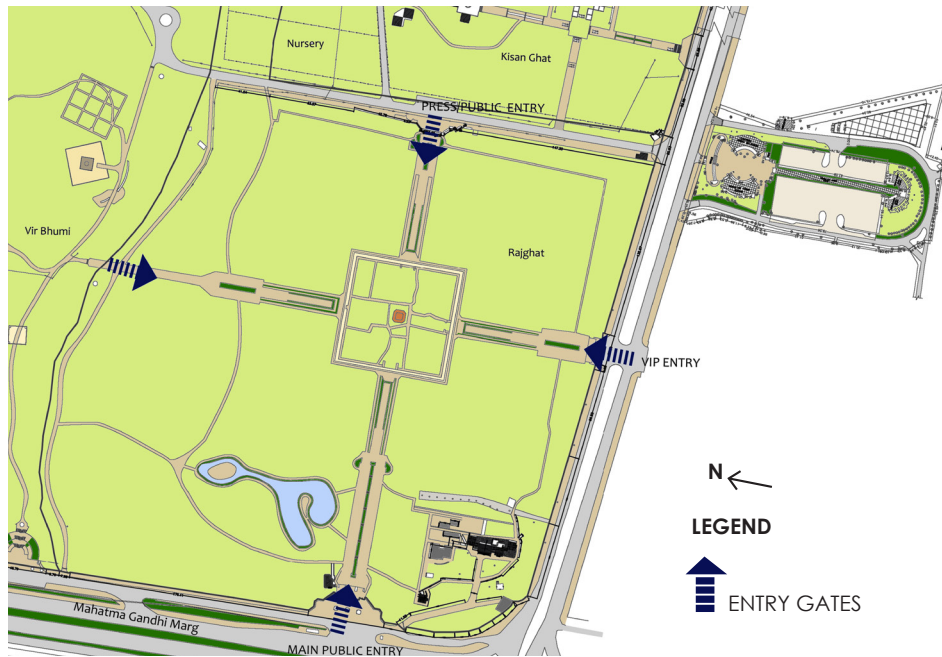


Proposed section AA' showing the parking area and shops

ii. Installation of Amrit Vachan

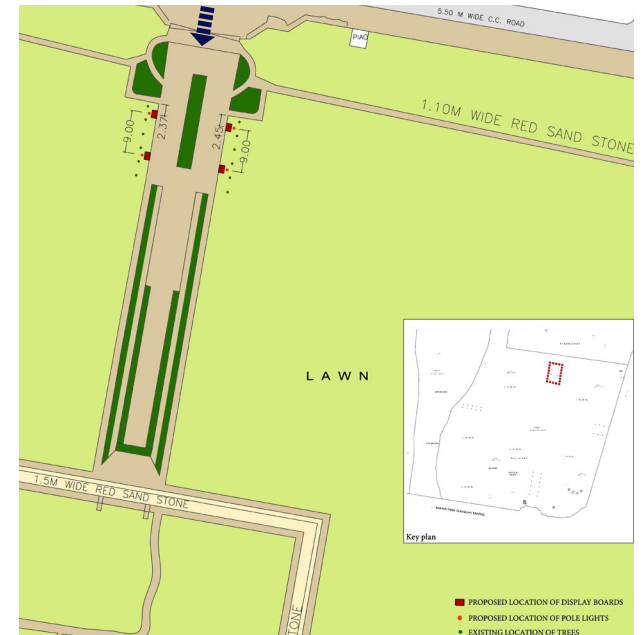
The meeting held under the chairmanship of Shri M.Venkaiah Naidu, hon'ble Minister for Urban Development and Chairman, Rajghat Samadhi Complex (RSC) requested Delhi Urban Art Commission to make design for the installations of Amrit Vachan, so as to ensure the aesthetics of the Samadhi Complex and its surroundings.

In context to this it was decided that the Chairman, Delhi Urban Art Commission would visit the site and give appropriate suggestions to the Rajghat Samadhi Complex. Various design options of the display boards were prepared by the commission, of which the design was short-listed and finalized with some suggestions.



Location of Display Boards

It was decided to put three display boards on both sides of the entry and exit of the VVIP entry pathway. The size of the display boards is 900mm. The material specifications suggested were Lakha Red Granite with dull finish to be used all around and Makrana white marble in the front.



Map showing the location of display boards for the Public/Press Entry.



Installation of display boards on site



View of display board on site.



Main Public Entry to Rajghat



VIP Entry to Rajghat



Press/Public Entry to Rajghat



Option for Interpretation Room

It was decided to have an Interpretation room with Interactive screens and Display screens which would display the information about Mahatma Gandhi. Design options for the Interpretation room were made with different screen size panels.